

The Wavelength Fund

November 2022

Investment Approach

Systematic Fixed Income

Research-driven approach based on systematized investment logic that applies quantitative tools to process fundamental economic and market information.

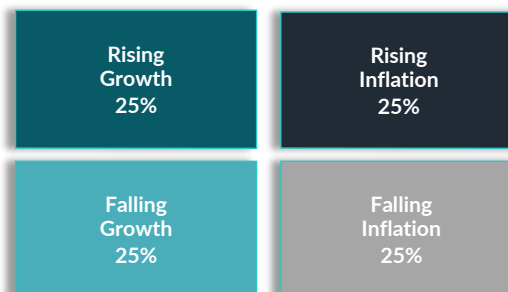
Seeks Factor-Based Excess Returns

Aims to generate consistent data-driven sources of excess returns using predictive signals based on factors of carry, momentum and value.

Enhanced Portfolio Diversification

Analyzes fixed income relationships through fundamental macroeconomic drivers to create diversification across potential market conditions.

Equal Risk Allocation



To Liquid Trading Instruments

Performance

	Cumulative Return as of 10/31/2022						Annualized Return as of 9/30/2022			
	October	YTD	1yr	3yr	5yr	ITD	1yr	3yr	5yr	ITD
WAVLX	0.65%	-13.26%	-12.95%	-3.23%	6.86%	17.46%	-12.89%	-1.18%	1.32%	1.73%
Bloomberg US Aggregate Bond Index	-1.30%	-15.72%	-15.68%	-10.89%	-2.68%	9.70%	-14.60%	-3.25%	-0.27%	1.18%
Bloomberg Global Aggregate Bond Index	-0.69%	-20.44%	-20.79%	-17.36%	-11.34%	-7.09%	-20.43%	-5.73%	-2.31%	-0.74%
S&P BGCantor 0-3 Month US Treasury Bill Index	0.20%	0.85%	0.86%	1.72%	5.78%	6.80%	0.66%	0.56%	1.11%	0.71%

Source: Bloomberg LP

Correlation Statistics

Correlation vs. Government Bonds ¹	0.10	Correlation vs. Real Estate ⁴	0.38
Correlation vs. Corporate Credit ²	0.57	Correlation vs. FI / Credit Hedge Funds ⁵	0.52
Correlation vs. Commodities ³	0.32	Correlation vs. Global Aggregate Bonds ⁶	0.34

The performance data quoted represents past performance. Past performance does not guarantee future results. Investment returns and principal value of an investment will fluctuate so that an investor's shares, when redeemed, may be worth more or less than their original cost. Current performance may be lower or higher than the performance data quoted. Call 1-866-896-9292 or visit www.wavelengthfunds.com for current month-end data.

Portfolio Commentary

- In October, the portfolio delivered returns of +0.65% in the face of headwinds for fixed income as geopolitical tensions over UK leadership and China's Communist Party Congress drove increased volatility.
- In this context, the Bloomberg US and Global Agg Indices suffered losses of -1.30% and -0.69%, respectively.
- On the month, the portfolio benefited from positive contributions across high yield credit, bank loans, and convertible bonds, as well as inflation-linked bonds which outperformed nominal US Treasuries.
- Positive results were partially offset by negative contributions from US and emerging market government bonds which came under pressure due to expectations for higher terminal interest rates from central banks.
- Results for the month helped demonstrate the advantage of balance amidst economic uncertainty, and the portfolio is positioned to harvest what we assess to be a substantially improved opportunity set across fixed income while maintaining its balance to potential outcomes as policy flows through to the economy.

Notes: Correlation is a statistic that measures the degree to which two securities move in relation to each other. Daily correlation since inception; ¹ Morningstar Global Government Bond Index, ² Bloomberg Global High Yield Corp Index, ³ S&P / Goldman Sachs Commodity Index, ⁴ Bloomberg World Real Estate Index, ⁵ HFRX Fixed Income - Credit Index, ⁶ Bloomberg Global Aggregate Bond Index. ITD represents performance since the fund's inception on 9/30/2013. See end of fact sheet for index definitions and descriptions.

About the Fund

INVESTMENT OBJECTIVE

The Fund seeks total return.

TURNKEY IMPLEMENTATIONS IN PORTFOLIOS

Core Fixed Income

Supplement core fixed income allocations with factor-based investment approach that seeks to be neutral to economic changes

Broad Diversification

Reduce riskier portfolio positions and allocate to investment process designed to be a consistent diversifier of directional risk

Strategic Alternatives

Supplement or replace alternative holdings with liquid, systematic exposure that seeks to outperform with absolute returns over the full economic cycle

Risk Management

The Fund will incorporate real-time drawdown control, volatility targeting and stress testing to help manage risk

Ticker

WAVLX

Inception Date

9/30/2013

12b-1 Fee

None

Gross Expense Ratio

1.46%

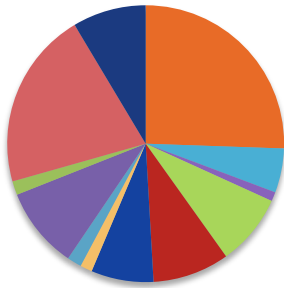
Net Expense Ratio*

1.20%

*Adviser contractually agreed until at least October 1, 2025 to waive management fee and/or reimburse expenses of Fund to the extent necessary to maintain total annual fund operating expenses at 0.99% of average daily net assets, exclusive of certain expenses such as those related to short sales and borrowing costs.

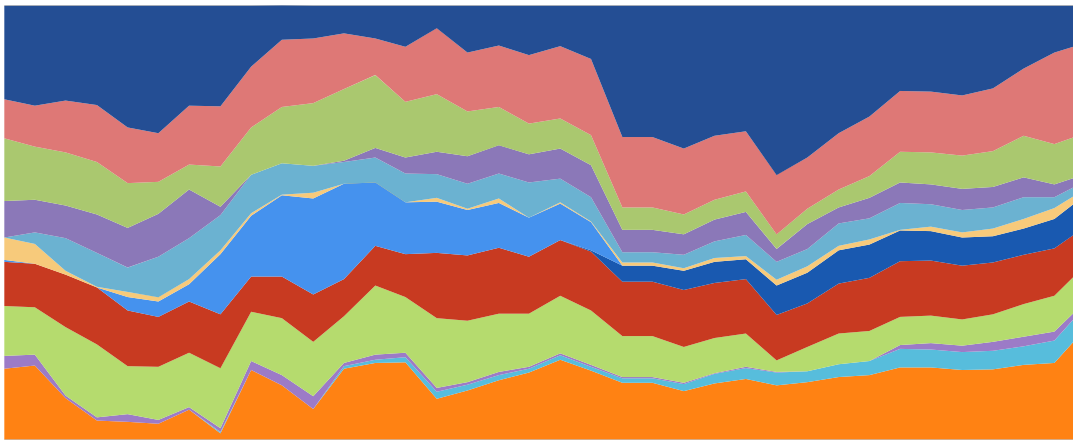


Sector Allocation (as of 9/30/2022)



Government Bonds	8.58%	Municipal Bonds	7.29%
Inflation-Linked Bonds	20.81%	EM Debt	8.95%
Convertible Bonds	1.62%	High Yield Credit	8.35%
Bank Loans	9.52%	REITs	1.07%
Index Futures	1.69%	Agency MBS	5.17%
Commodities	1.41%	Cash & Equivalents	25.55%

Historical Sector Allocation (as of 9/30/2022)



12/31/2013 12/31/2014 12/31/2015 12/31/2016 12/31/2017 12/31/2018 12/31/2019 12/31/2020 12/31/2021

Government Bonds Inflation-Linked Bonds Bank Loans Convertible Bonds Index Futures Commodities
Investment Grade Bonds Municipal Bonds EM Debt High Yield Credit REITs Agency MBS
Cash & Equivalents

Portfolio holdings are subject to change and should not be considered a recommendation to buy or sell securities.

NOTES:

Prior to August 26, 2022, the Wavelength Fund was named the Wavelength Interest Rate Neutral Fund.

You can not invest directly in an index. The S&P/BGCantor U.S. Treasury Bill Index is a broad, comprehensive, market-value weighted index that seeks to measure the performance of the U.S. Treasury Bill market. The Bloomberg Barclays Global Aggregate Bond Index is a global bond benchmark that includes treasury, government-related, and securitized bonds. The Bloomberg US Aggregate Bond Index is a broad-based flagship benchmark that measures the investment grade, US dollar-denominated, fixed-rate taxable bond market. Morningstar Global Government Bond Index includes bonds issued by the governments of the world's most robust developed markets. The Bloomberg Global High Yield Index is a multi-currency flagship measure of the global high yield debt market. S&P / Goldman Sachs Commodity Index is a composite index of commodity sector returns representing an unleveraged, long-only investment in commodity futures that is broadly diversified across the spectrum of commodities. Bloomberg World Real Estate Index is a capitalization-weighted index of the leading real estate stocks in the world. HFRX Fixed Income - Credit Index includes strategies with exposure to credit across a broad continuum of credit sub-strategies.

PRINCIPAL RISKS:

The use of derivatives, forward and futures contracts, and commodities exposes the Fund to additional risks including increased volatility, lack of liquidity, and possible losses greater than the Fund's initial investment as well as increased transaction costs. Concentration generally will lead to greater price volatility.

This Fund enters into a short sale by selling a security it has borrowed. If the market price of a security increases after the Fund borrows the security, the Fund will suffer a potentially unlimited loss when it replaces the borrowed security at the higher price. Short sales also involve transaction and other costs that will reduce potential Fund gains and increase potential Fund losses. Diversification does not eliminate risk. An investor considering the Fund should be able to tolerate potentially wide price fluctuations. The Fund is subject to high portfolio turnover risk as a result of frequent trading, and thus, will incur a higher level of brokerage fees and commissions, and cause a higher level of tax liability to shareholders in the Fund. The Fund may attempt to increase its income or total return through the use of securities lending, and they may be subject to the possibility of additional loss as a result of this investment technique.

This Fund is a non-diversified fund. Because the fund may invest in securities of smaller numbers of issuers, the Fund may be more exposed to the risks associated with and developments affecting an individual issuer than a fund that invests more widely, which may, therefore, have a greater impact on the Fund's performance.

This Fund is not suitable for all investors.

Investors should carefully consider the investment objectives, risks, charges and expenses of the Fund before investing. To obtain a prospectus containing this and other important information, please call 1-866-896-9292 or visit www.wavelengthfunds.com to view or download a prospectus online. Read the prospectus carefully before you invest. There are risks involved with investing including the possible loss of principal. Past performance does not guarantee future results. Wavelength Funds are distributed by Ultimius Fund Distributors, LLC.

Control number: 15938590-UFD-11072022

Wavelength Principals



Andrew Dassori

Co-Founder & Chief Investment Officer
Wavelength Capital Management
BSc, London School of Economics



Mark Landis

Co-Founder
Wavelength Capital Management
BS, Union College

About Wavelength Capital Management

Wavelength Capital Management is a forward-thinking investment management firm that provides research, advisory, and fund management services to institutional and individual investors. The firm's investment philosophy is based on the macroeconomic drivers of asset prices and its investment strategies are designed to generate consistent risk-adjusted returns uncorrelated with traditional asset classes over long-term macroeconomic cycles